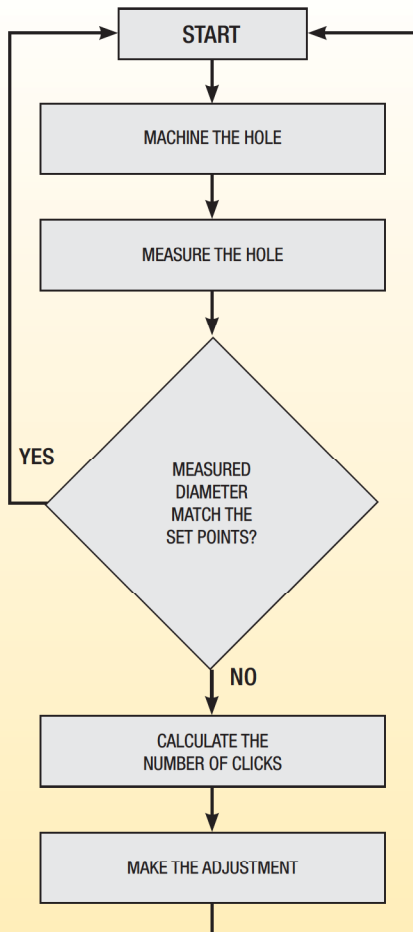


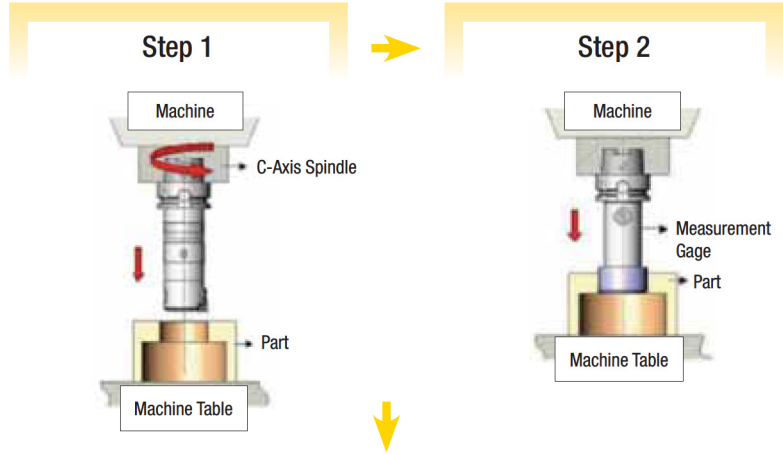
### The Romicron Closed Loop Boring Process

Closed Loop Boring (CLB) provides the unique possibility to automate the insert wear compensation with minimal investment due to the precise 2 µm adjustment in diameter of these tools per increment. Retrofit existing machines to automated wear compensation using the standard CLB pin without any electronic equipment needed besides a measuring device of holes produced.



NOTE: This process is only possible with the Romicron system because it does not require tools to make the adjustment.

1. A precision system measures the holes after the machine process. The data is sent to the CNC.
2. The values are compared to the set points.
3. If the diameter is in the range of the specified set points, the machine goes to the next hole. Otherwise, the software calculates the necessary increment and automatically adjusts the Romicron using the CLB pin.



#### CNC Machine Command



CNC calculates the correction and commands the tool.

